

posco
A&C

posco
A&C

POSCO A&C is in The Engineering & Construction of POSCO Group.
We Create the Value of Dream for the Better Future.

In 1968, POSCO started with no practical steel industry and has served as the leading force in the nation's economical development for the past 40 years, growing into a global steelmaker producing over 33 million tons of steel today.



CURRENT STATUS OF PROFESSIONAL MANPOWER
(by December, 2013)

Total Number on Employees	565
Number of Certificated Manpower	200
Registered Architects	41
Professional Engineers	92 (Including 6 International Engineers)
PMP / CMP / CCM / PCM	42 (PMP 3 / CMP 29 / CCM 1 / PCM 9)
LEED AP	4

STEEL	MATERIAL CHEMISTRY	ENGINEERING & CONSTRUCTION	ENERGY/ICT	TRADE	SUPPORT
POSCO SS POSCO C&C POSCO P&S POSCO AST POSCO TMC SNNC Poshimal	POSCO CHEMTECH POSCO M-TECH PNR POSCO ESM POSFINE	POSCO A&C POSCO E&C POSCO Engineering POSCO PlantEC	POSCO ENERGY POSCO ICT	Daewoo International	POSMATE POSCO Terminal Co., NtoB POSCO Research Institute Postech Venture Capital POREKA POSCO HUMANS

* POSCO E&C Office, Songdo

▶ PSIB (POSCO E&C OFFICE)



ARCHITECTURE DESIGN & ENGINEERING

Architectural Design
Urban Design
Eco-Friendly / BIM

▶ ASEM Tower



CONSTRUCTION MANAGEMENT

CM
PLANT CM
Eco-Friendly / BIM

Services

DESIGN-BUILD

Steel Construction
Steel Building Material Planning
Quality & Technical Innovation



▶ POSCO SS&CC Tower

MODULAR SYSTEM

Domestic Modular Architecture
International Modular Architecture
Eco-Friendly / BIM



▶ POSCO Family House



Architecture & Design

Design Excellency based on Technology

Sustainable design innovation and technology development have allowed us to design economical and eco-friendly structures. We provide well-organized design integrated systems through efficient steel based architecture and BIM(Building Information Modeling), leading the way in future trends. We value space and practical designs that respect and benefit humans.

06



Construction Management

Our accumulated experience and knowledge that have been obtained through participation in Construction Supervision & CM since the foundation of Pohang steelworks construction have brought us numerous successes in plant CM in Korea and abroad.

Our knowledge in construction supervision is based on POSCO E&C Group's PEPCOM system as well as VE/LCC strategy to maximize clients' asset values so that construction projects can be completed on time while minimizing cost and risk. We have expanded our business field from the existing general supervision/CM to function extended CM(CM+Design), construction liabilities and others. And we have created synergy effects between Design and CM to provide the best quality products and services.

07

Design-Build

Design-build refers to the unification of the design and construction agents into a single contractor. The new architectural process adopted by POSCO A&C unifies and carries out all activities so that the building that the customer wants can be completed by one company. This enables a designer to participate in the construction process, unifies liabilities, and reduces the construction period & cost in order to achieve the perfect architecture.



• **LOCATION** Fifth Industrial Complex, Cheonan City, Chungcheongnam-Do
• **SITE AREA** 22,451m²
• **FLOOR AREA** 5,971.8m²

MUTO Modular System

09

The New Architectural Paradigm
For the 21st Century :
POSCO A&C Modular System 'MUTO'

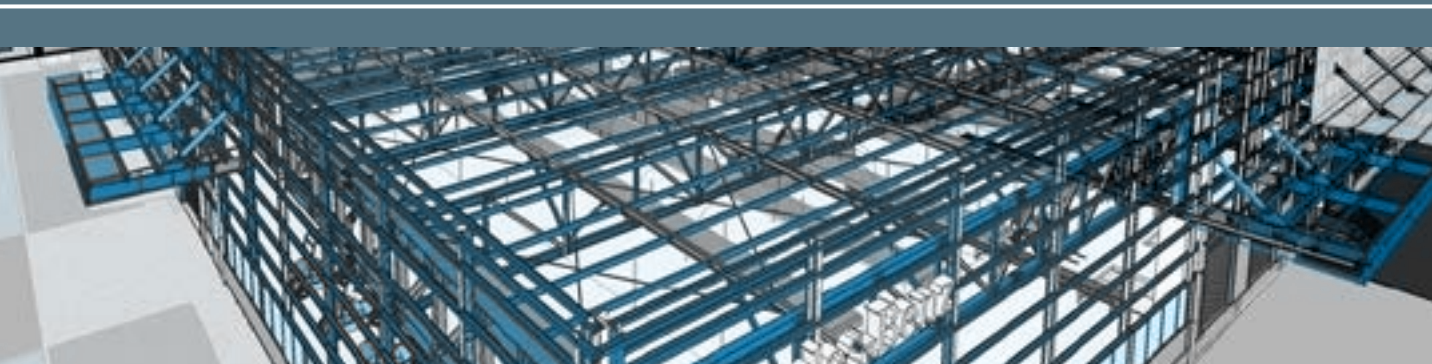


MUTO is created to maximize changeability and mobility;

Basic Aspects of POSCO A&C Modular System.

The brand name 'MUTO' is a combination of 'M' from module and 'UTO' from utopia. It means 'evolution' or 'change' in Latin representing a new future space created by POSCO A&C.



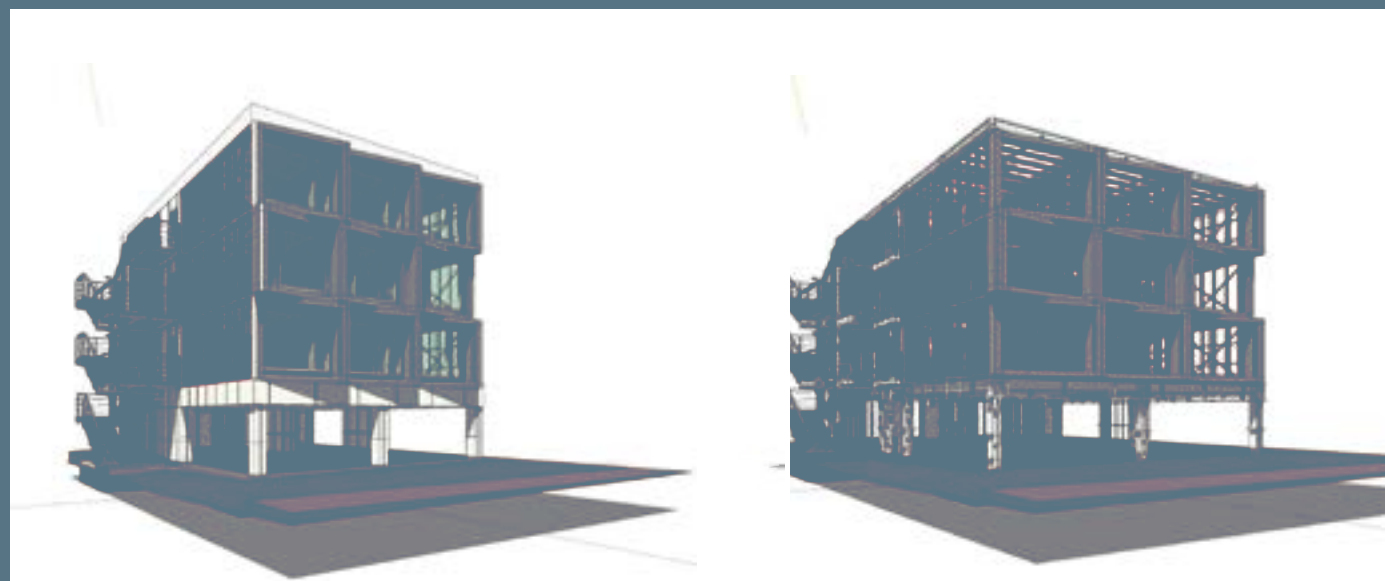


BIM

10

We make systematic communication possible between the client and the operator through BIM(Building Information Modeling), and support the minimization of construction errors, shortening of deadlines, and reduction of construction costs.

We received the Best Practice Award in the Construction sector of the 2009 BIM Awards, in recognition for our technology.



Sustainable: Eco-Friendly Future Architectural System



POSCO GREEN BUILDING, Incheon, Korea

11



POSCO EXHIBITION CENTER, Incheon, Korea

LEED Design Element (Leadership in Energy & Environmental Design)

[Sustainable Space Creator for People, Nature, and Future]

- Realize the best eco-friendly technology through sustainable green city
- Implement optimal energy reduction with IDP(Integrated Design Process)
- Collaborate with global companies in Green

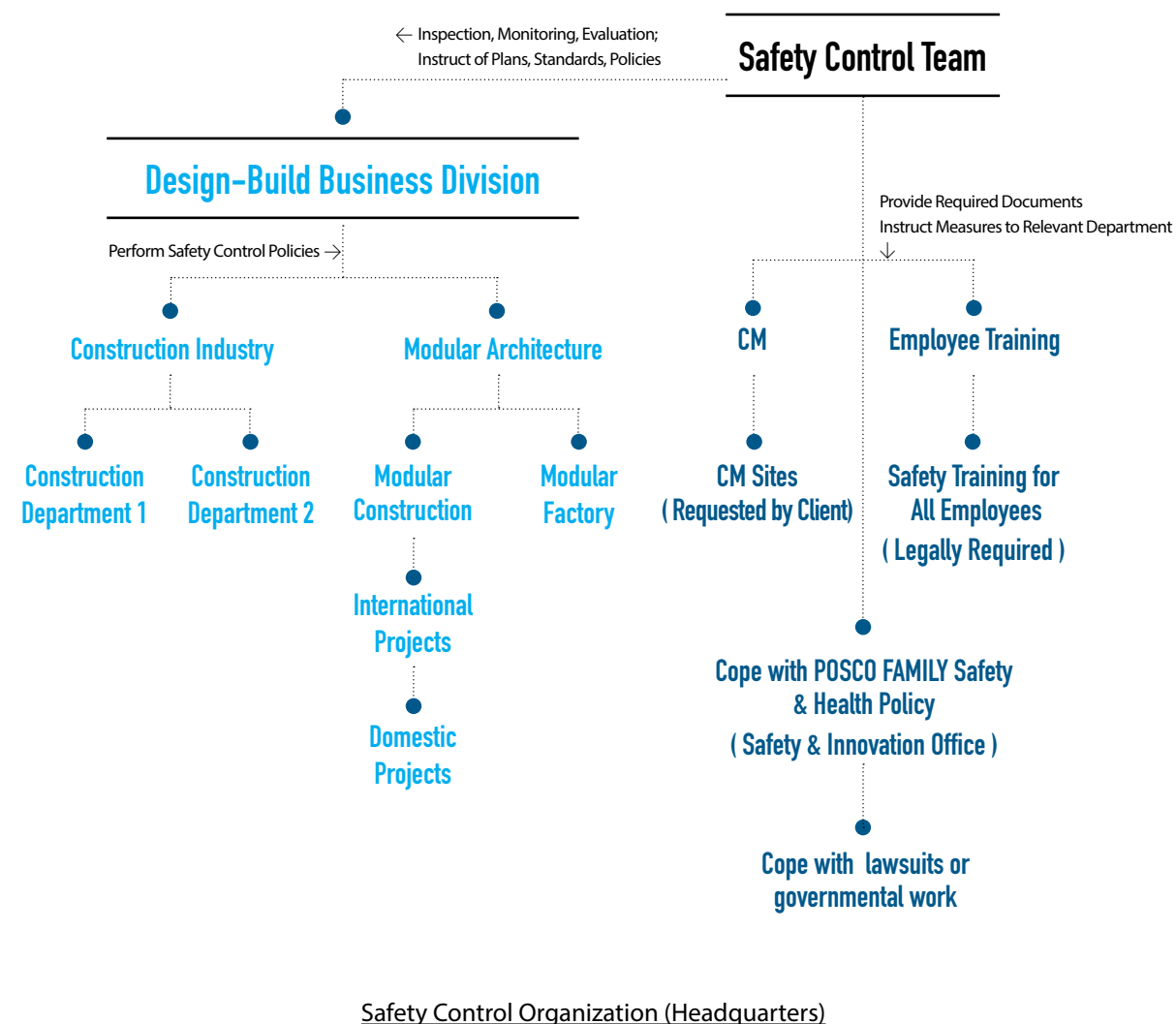


Safety: OHSAS 18001

The Occupational Health and Safety Advisory Services (OHSAS)

OHSAS 18001 is a British Standard for occupational health and safety management systems. It exists to help all kinds of organizations put in place demonstrably sound occupational health and safety performance. It is widely seen as the world's most recognized occupational health and safety management systems standard.

12



Beyond One-stop Service for a Better Space

As a company that prioritizes communication with our clients on trust, we will create a new space of our dreams through creative ideas and undaunted spirit by challenge.

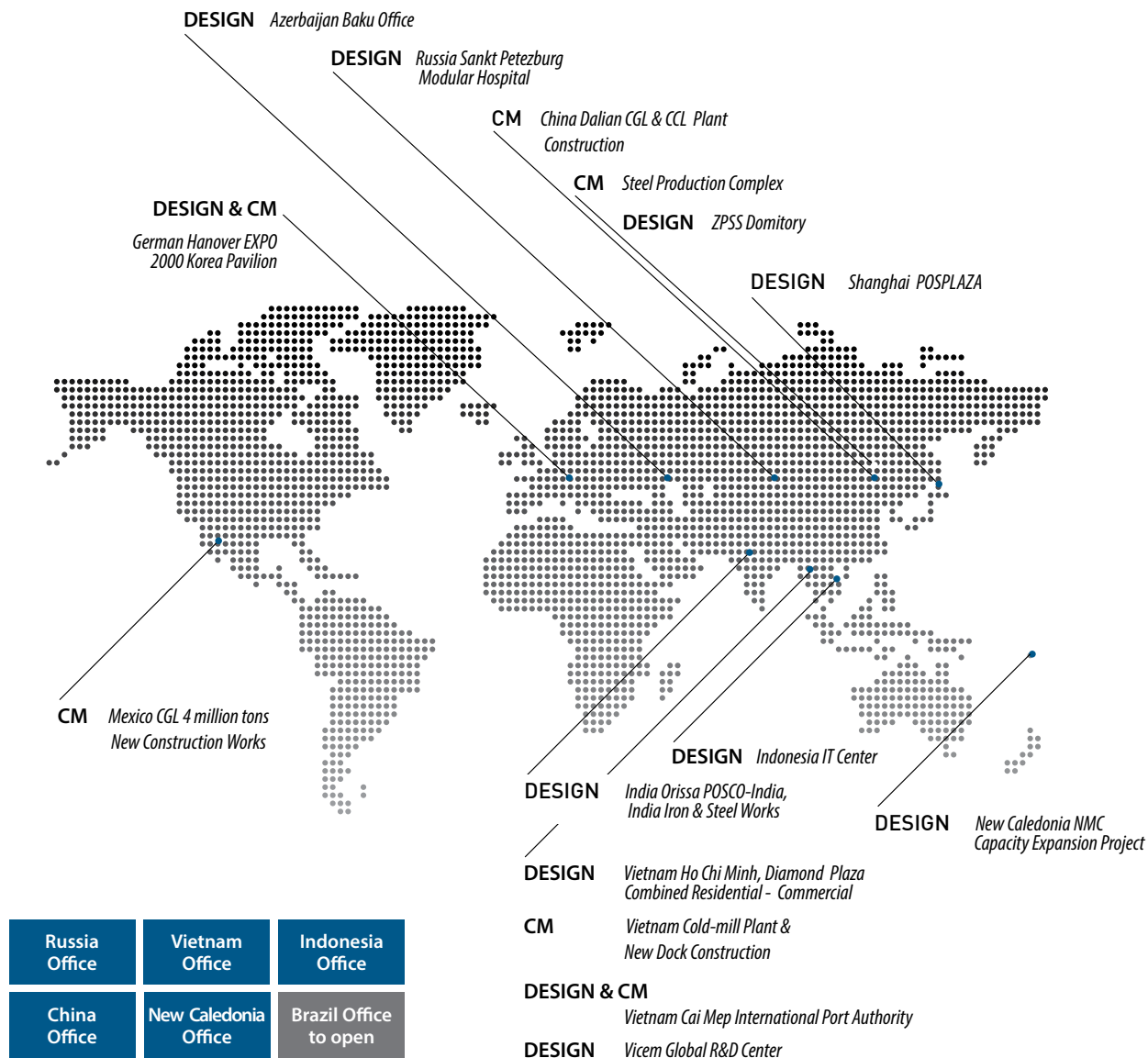
44 years

POSCO A&C History

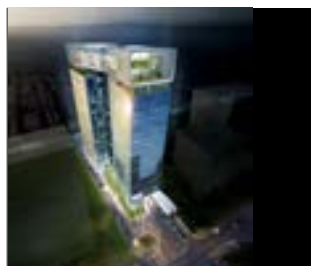


1970.07	Steel Eng Consultant Establishment
1973.12	Plant Eng Service Registration
1995.02	Changed Company Name to POS-A.C
1995.07	Engineering Agent Registration
1995.11	Comprehensive Supervision Registration
1995.12	Safety Consulting Agency Registration
1996.05	Comprehensive Consulting Registration
1996.05	Fire Construction Consulting Registration
1996.06	Qualified Architect Business Registration
1998.09	Design Consulting Registration
2001.12	Overseas Business Registration
2004.03	Rebuilding Project Consulting Business
2004.10	Professional Design Registration
2006.04	Electrical Works Business
2006.05	Fire Facility Construction Business
2007.06	IT Construction Registration
2008.03	Real Estate Development Business
2009.06	Interior Architecture Registration
2009.06	Civil E&C Registration
2009.06	Facility Maintenance Management
2009.07	Housing Construction Business
2009.12	Industrial Design Business
2010.06	Changed Company Name to POSCO A&C Co., Ltd
2012.02	Cheonan Modular Factory Open

13



Global Offices & Projects



Vietracimex Pham Hung

Hanoi, Vietnam

- Residential / Commercial Building
- Design & Engineering



DIAMOND PLAZA

Ho Chi Minh, Vietnam

- Office & Commercial Building
- Design & Engineering



ZPSS

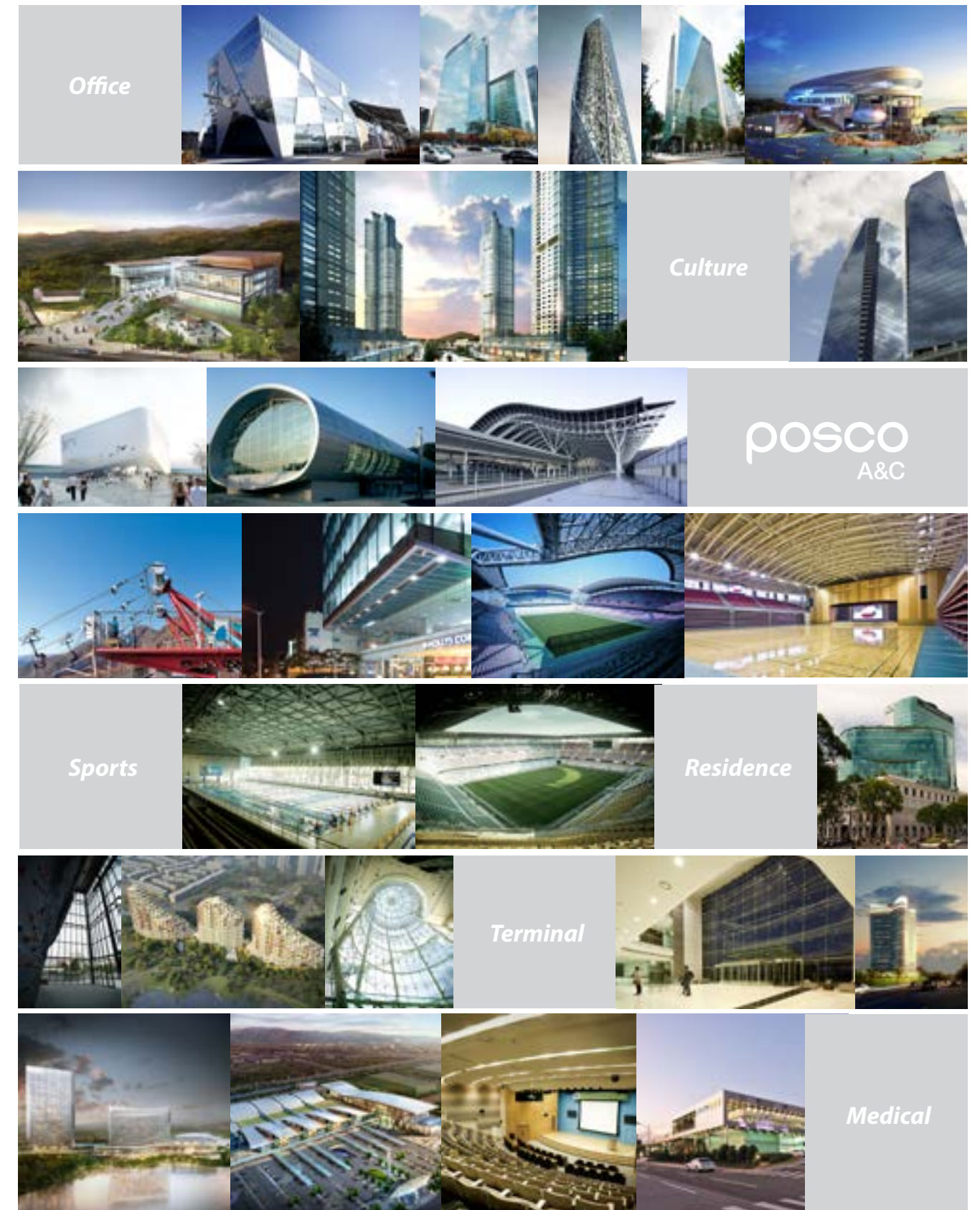
Zangjiagang, China

- Office Building, Dormitory and Cafeteria
- CM + Design

Portfolio

Various Projects All Over The World

As shown below, we have completed diverse projects globally including commercial, cultural, leisure, transportation, residential, health care, etc.





SEOUL (HQ)

POS Tower, 577 Seolleung-ro, Gangnam-gu, Seoul, Korea
TEL 82.2.2018.7700 FAX 82.2.2018.7799

POHANG

8F Kyobo Life Insurance Co. Bldg., 109, Jungheung-ro, Buk-gu, Pohang-si, Gyeongsangbuk-do, Korea
TEL 82.54.271.2300 FAX 82.54.271.2323

GWANGYANG

12-14, Huimang-gil, Gwangyang-si, Jeollanam-do, Korea
TEL 82.61.791.2557 FAX 82.61.791.2559